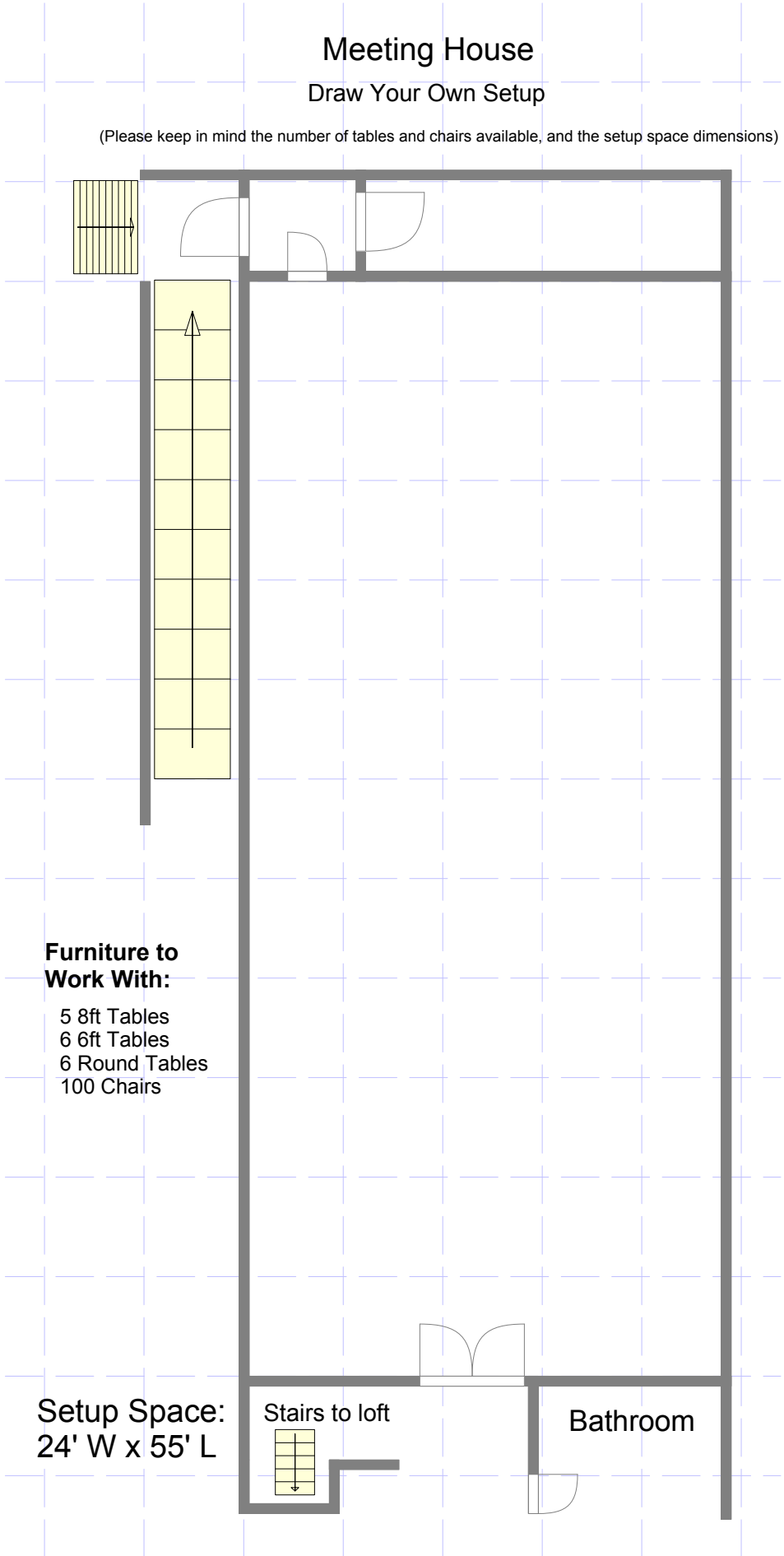


# Meeting House Empty

## Meeting House

### Draw Your Own Setup

(Please keep in mind the number of tables and chairs available, and the setup space dimensions)



#### Furniture to Work With:

- 5 8ft Tables
- 6 6ft Tables
- 6 Round Tables
- 100 Chairs

Setup Space:  
24' W x 55' L

Stairs to loft

Bathroom