

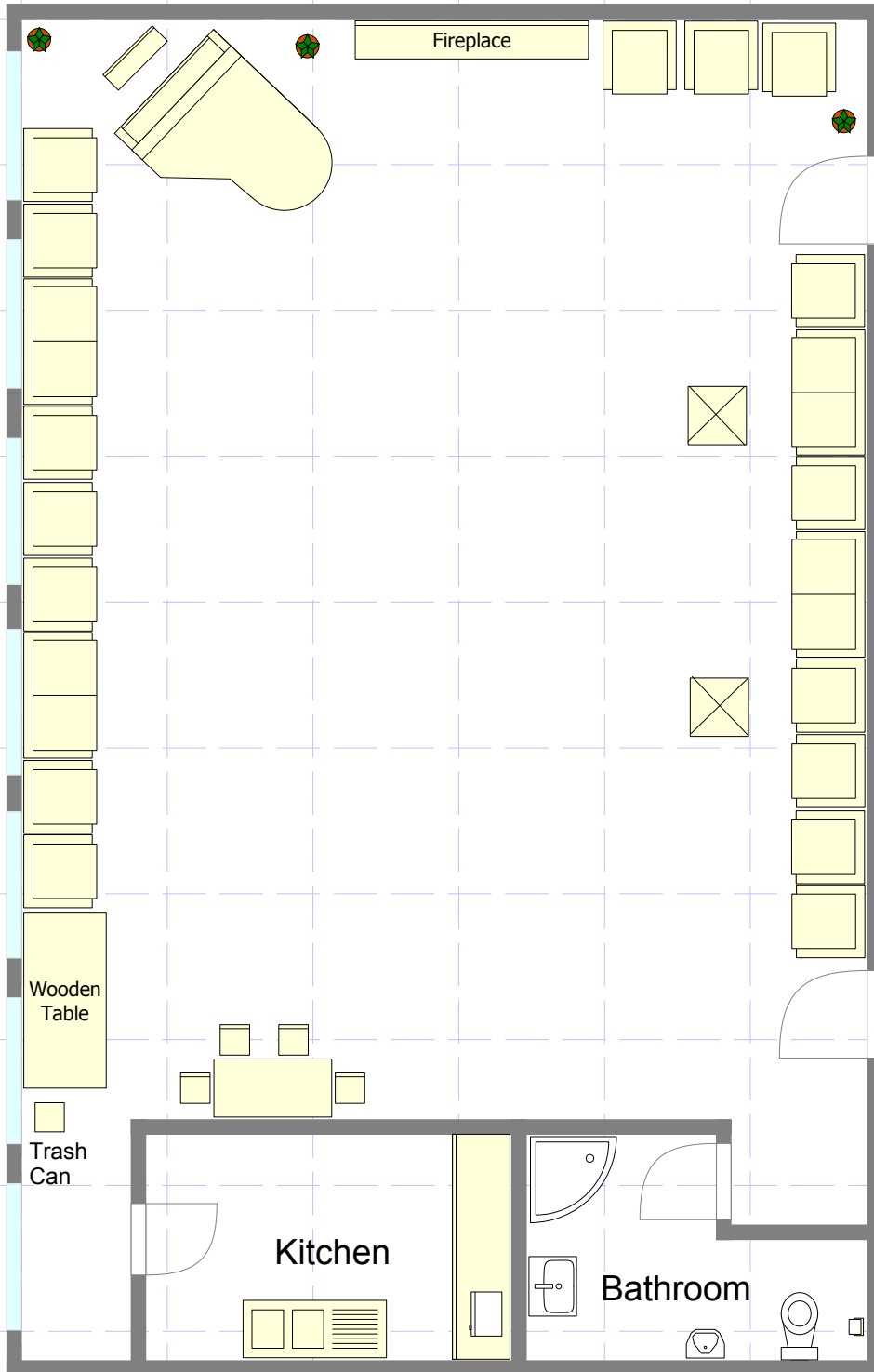
Peck Empty

Furniture To Work With
7 - Rounds 60"
3 - 6' Tables
9 - 8' Tables
75 Chairs

Setup Space:
29' W x 38' L

Peck Room Draw Your Own Setup

(Please keep in mind the number of tables and chairs available, and the setup space dimensions)



Project dimensions: 29x46 ft